

Using Neural Network for DJIA Stock Selection

Tong-Seng Quah

Abstract—This paper presents methodologies to select equities based on soft-computing models which focus on applying fundamental analysis for equities screening. This paper compares the performance of three soft-computing models, namely Multi-layer Perceptrons (MLP), Adaptive Neuro-Fuzzy Inference Systems (ANFIS) and General Growing and Pruning Radial Basis Function (GGAP-RBF). It studies their computational time complexity; applies several benchmark matrices to compare their performance, such as generalize rate, recall rate, confusion matrices, and correlation to appreciation. This paper also suggests how equities can be picked systematically by using Relative Operating Characteristics (ROC) curve.

Index Terms—Stock Selection, Neural Network, Perception, Radial Basis Neural Network, Neuro-Fuzzy Inference System.

I. INTRODUCTION

There have been active researches on applying soft-computing models in areas of investment since decade ago. The main motivation is to develop an expert system to resemble the decision making process of investment experts. Soft-computing models are attractive as it offers a method to formulate the noisy and non-deterministic environments. As the cost of computational power decreases, we can afford to have more complex techniques which are expected to have lower signal-to-noise ratio.

There are two branches for applying soft-computing models on investment, which are technical analysis and fundamental analysis. Technical analysis is the most popular area in research. It is easier to predict due to the less noisy environment. Generally, what it applies are time-series prediction and pattern recognition. Such work includes equities price and volume movement. Technical analysis does not consider the underlying factors of equities' financial health profile. Intuitively, this is only useful for short-term trading decision making.

Fundamental analysis is mostly for long-term investment decision. Accounting variables and financial ratios are usually used for inspecting the health of the investment products. Lesser studies were conducted in this area as compared to technical analysis. Since fundamentals will have stronger relationship to the price movement in the long-run, this makes them good candidates for neural network applications. We conduct a study on fundamental analysis with the three

selected soft-computing models.

II. LITERATURE REVIEW

A. Soft Computing

Soft computing is useful for solving problems which are described by multiple variables and multiple parameters. These problems may have non-linear coupling among these variables and parameters which are extremely difficult to find mathematical solutions. Therefore, it can be very costly to find solutions for such problems. To deal with such problems, one has to trade off the complexity with the uncertainties and imprecision. Thus, soft computing comes into picture. Soft computing exploits the tolerance for imprecision, uncertainty, partial truth and approximation to achieve tractability, robustness and low solution cost [29]. The principal constituents of soft computing are: fuzzy logic, artificial neural networks, probabilistic reasoning, evolutionary computation, machine learning and chaos theory, etc.

B. Multi-layer Perceptrons

Figure 1 shows a single layer of neurons. It contains S neurons and R inputs in the layer. In the network, each element of input vector P is connected to each neuron input through the weight matrix w . The i th neuron has a summation function that gathers its weighted inputs and bias to form its own scalar output $n(i)$. The various $n(i)$ taken together form an S -element net input vector n . Finally, the neuron layer outputs form a column vector a . Multi-layer network can be created by feeding the outputs of layer to be input of next layer.

MATLAB Toolbox Help defines learning rule as a procedure for modifying the weights and biases of a network, as known as training algorithm [31]. The learning rule is applied to train the network to perform some particular task. Learning rules may be broadly categorized as supervised learning and unsupervised learning. In supervised learning, the learning rule is provided with a set of examples (training set) which contain many pairs of inputs and target outputs. As the inputs are applied to the network, the network outputs are compared to the targets. The learning rule is used to adjust the weights and biases of the network in order to move the network outputs closer to the targets. In unsupervised learning, the weights and biases are modified in response to network inputs only. There are no target outputs available. Most of these algorithms perform clustering operations. They categorize the input patterns into a finite number of classes. This is especially useful in such application as vector

Tong-Seng Quah is with the School of Electrical and Electronic Engineering, Nanyang Technological University, Republic of Singapore (phone: 65-6790-5871; fax: 65-6270-1556; e-mail: itsquah@ntu.edu.sg).

quantization.

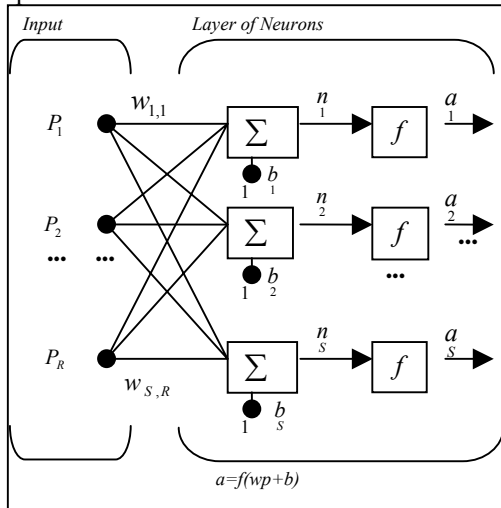


Figure 1: A layer of neurons

C. Radial Basis Neural Network

Radial Basis Neural Network (RBF) is defined as means for interpolation in a stream of data as it has built into a distance criterion with respect to centre [30]. Figure 2 shows a radial basic network with R inputs. The net input to the *radbas* transfer function is the vector distance between its weight vector W and the input vector P , multiplied by the bias b . The radial basis function has a maximum of 1 when its input is 0. As the distance between W and P decreases, the output increases. Thus, a radial basis neuron acts as a detector that produces 1 whenever the input P is identical to its weight vector P .

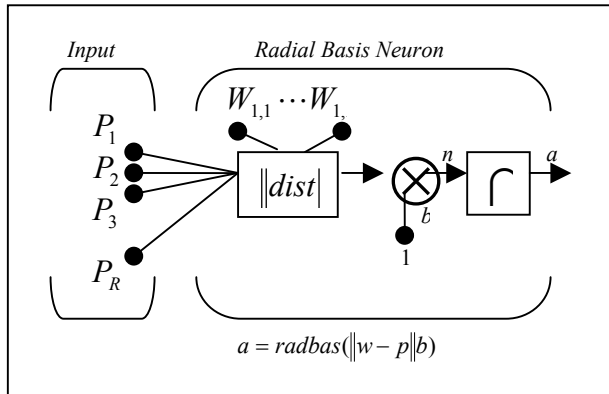


Figure 2: Radial basic network

D. Adaptive neuro-fuzzy inference system

ANFIS system, which is an instance of the more generic form of Takagi-Sugeno-Kang (TSK) model replaces the fuzzy sets in the implication with a first order polynomial equation of the input variables [17]. Generally, a r -input one-output ANFIS system consists of rules in the following form: -

R_i : IF (x_1 is A_{i1}) and...and (x_r is A_{ir}).
 THEN $y = f_i(x_1, x_2, \dots, x_r) = b_{i0} + b_{i1}x_1 + \dots + b_{ir}x_r$

where:

- x is the input vector,
- A_i is the fuzzy membership function,

f_i is a first order polynomial function, and
 $b_{ij} j=0,1,\dots,r$ are real-valued parameters.

The fuzzy inference performed by ANFIS is an interpolation of all the relevant rules based on the physical location of the input data in the fuzzy subspaces. The predicted output of the model is generally given by the following equation: -

$$y = \frac{\sum_{i=1}^L \alpha_i f_i(x_1, x_2, \dots, x_r)}{\sum_{i=1}^L \alpha_i} = \frac{\sum_{i=1}^L \alpha_i (b_{i0} + b_{i1}x_1 + \dots + b_{ir}x_r)}{\sum_{i=1}^L \alpha_i}$$

where α_i is the matching degree of rule R_i , which is computed by considering the product of all the relevant membership functions of the rule.

E. Soft computing in financial market

Investment and financial trading problems are usually divided into two disciplines, which are fundamental analysis and technical analysis. Fundamental analysis techniques provide a framework for examining underlying forces which affect the price of an investment; on the other hand, technical analysis techniques analyze the past trading data, which includes prices, volume, open interest, etc. and believing these are reflecting the behavior of market participants [23]. Generally, fundamental analysis is preferred for long-term investment whereas technical analysis is for short-term trading. However, they also complement each other for better trading decisions in the research on trading expert system, for example, the work of [3].

The common soft computing techniques which are applied in both analyses are time series prediction, pattern recognition and classification, as well as optimization. Time series technique forecast future data points using historical data sets, for example, studying at the historical daily closing price in order to predict tomorrow closing price. Pattern recognition and classification try to classify observations into classes, for example, classifying securities into "winner" and "loser" classes. Optimization involves solving problems where patterns in the data are not known, for example, determining the optimal point to enter the securities market [23].

The focus of this article is to apply soft computing with fundamental analysis in DJIA equities picking.

F. Challenges

This problem is not as easy as it appears. There are well-known challenges for equities picking with soft computing, such as:

- Selection of additional features to improve the performance, as suggested by [19], [9]. Intuitively, the more the features, the more accurate the neural networks performance are. However, the nature of financial market is noisy and stochastic. The stock market itself is not only driven by fundamental data, but also by human psychological factors and market

principles. Because of this, the system may suffer the curse-of-dimensionality issue. Hence, the fundamental rule is to select most suitable features but not trying to cover as many features as possible. We will also present the time complexity comparison of the under studied soft computing models.

- Poor predictability accuracy. Due to the non-deterministic nature of the financial market, artificial neural network models may not be able to out-perform significantly but slightly to the logit model [9]. With such, we will present not only the accuracy as one of the performance matrices, but also the appreciation of the picked equities, as [25].
- Data availability. It is highly impossible to obtain all the data that impact the stocks price movements. We need to maximize the accuracy and equities appreciation based on the limited data available [19].

There are many other challenges, such as trading rules to simulate real life trading system to include trading cost, time management, etc. The fundamental objective is to build a reliable decision support system to replace expert knowledge in financial world.

III. METHODOLOGY

The history of fundamental analysis may be traced back to the work done by Benjamin Graham who is acknowledged as the father of modern security analysis. The work of [11] suggested that it is possible and cheap to have positive risk-adjusted rates of return with Benjamin Graham’s common stock selection rules. This indicates the existence of relationship between the returns of the equities and their fundamental attributes, such as price-to-earning ratio, capitalization and size of the firms. This finding spun off much research work, such as [2], [5], [6], [1], [11], [13], [15], [20], [21], [27] as mentioned in [25] and [26]. Their work further support the ten attributes which was proposed by Graham in his first book, “Security Analysis” in 1934 [7], to screen undervalued equities. Besides Graham’s ten attributes, Aby further developed another four fundamental rules for equities screening [2]. As such, Vanstone chooses the combination of Graham’s rules and Aby’s rules to form the attributes of soft-computing models to identify high potential equities [25], which are:

Table 1: Identified input variables for modeling

Attributes	Description
P/E ratio	Price to earning ratio
BVPS	Book value per share
ROE	Return on equities
DPR	Dividend payout ratio
DY	Dividend yield (annual dividend per share over price per share)
PBR	Price to book ratio
CA	Total current assets
GD	Gross debt
ANS	Weighted average number of shares

CR	Current ratio (current asset over current liability)
EPS	Earning per share

This work is therefore based on the above eleven attributes, selectively chosen by Vanstone, based on Granhom’s and Aby’s rules [25].

The classification problem of equities selection is defined as the following. “Class 1” is defined as any stock which appreciates in share price in value equal or more than 80% within one year, otherwise is classified as “Class 2”. This is in-line with [25] and [26] with the exception that we are using 80% cut-of-point instead of 100% to separate the data set into two classes. The reasons are that “Class 1” data can be increased by almost 50% if we lower the cut-of-point to 80%, and it is also highly desirable even if we have 80% of share price appreciation instead of 100%.

The nature of collected data set is imbalanced. Imbalance data essentially means at least one of the classes constitutes only a very small minority of the data [8]. And, the interest usually leans towards correct classification of the “rare” class (which we will refer to as the “Class 1” in our context). Refer to [8], there are two common approaches to handle imbalanced data. One is by assigning high cost to misclassification of the minority class and trying to minimize the overall cost, which is called, cost sensitive learning. Another is to use a sampling technique, which is either down-sampling the majority class or over-sampling the minority class, or both. Down-sampling means reducing the size of the samples and over-sampling means blow up the samples by data replication. We will choose the latter as down-sampling may result in loss of information.

IV. RESULTS

The market under study is DJIA. A total of 1630 equities have been extracted with a period of ten years, from 1995 to 2004. We used all equities, including those that have been de-listed in order to avoid bias. For the required features with no data available, the value zero will be assigned. We then remove those entries that have missed more than half of the required features, in order to reduce the possible noise to the benchmark.

To be specific, every row contains eleven attributes and a known class, which is either “Class 1” or “Class 2”. The information of the “class” forms the output of our soft computing models. The training set (eight years) consists of 10,243 input rows. Out of these 10,243 rows, there are 9,224 rows are classified as “Class 2” and 1,019 “Class 1” inputs. This is an imbalanced data; “Class 2” dominates the data set but our interest is on identifying the minority class – “Class 1”. Over-sampling technique is applied on “Class 1”; it blows up “Class 1” from 1,019 input rows to 9,224 input rows and the data now is balanced by having half as “Class 1” and half as “Class 2. It is not necessary to apply over-sampling technique on validation set and test set, the soft-computing

models only be trained with training set but not the rest..

In Neural Network methodology, the sample is often subdivided into “training”, “validation”, and “test” sets [28]. [4] contains detail discussion as well as the definitions. The following table summarizes the designs of the processed data.

Table 2: Summary on setting I and II

	Training set	Validation set	Test set
I	1995 – 2002 (8 years) Original: 10,243 inputs Over-sampling to:18,448 inputs	N/A	2003 – 2004 (2 years) Original: 2,422 inputs No over- sampling is done
II	1995 – 2002 (8 years) Original: 10,243 inputs Over-sampling to:18,448 inputs	2003 (1 year) Original: 1,448 inputs No over- sampling is done	2004 (1 year) Original: 974 inputs No over- sampling is done

Setting 1 will be used for Experiment I, which is for the comparisons of the accuracies and appreciation among the three soft computing models. We follows 80:20 rules as discussed in [25], which is using the first 80% (eight years) of the data set to predict the known results for the last 20% (two years) of the data set. Setting 2 will be used for Experiment II, which is for picking the most valuable equities by choosing the best cut off point for the soft computing models as well as picking the equities that will appreciate the most based on the significant of the output values. That is the reason of having validation set here, which is to choose the best cut off point, such that the appreciation of the signaled equities can be maximized.

A. Neural Network Training

MLP is configured with the number of hidden neurons being two-times of the input layer, which is twenty-two neurons. The training algorithm is gradient descent with momentum and adaptive learning rate. Both the hidden layer neurons and output layers neurons have tangent sigmoid activation functions, which have the output values between -1 and +1. ANFIS is configured using subtractive clustering with a radius of 0.20. And, it is trained for 10 epochs. The trained ANFIS model has two rule nodes, each nodes is represented as a locally-defined linear functions. GGAP-RBF which has been proposed by [10] in 2005, is also used in our comparative study. We applied the provided MATLAB source codes by [10] for training.

Table 3: Comparison of computational time

Soft-computing models	Computational Time (for training)	Descriptions
MLP	188.45 seconds	Training algorithm:

		Gradient descent with momentum; Hidden layers: 22 neurons; 500 epochs
ANFIS	396.85 seconds	Subtractive clustering; 10 epochs
GGAP-RBF	360.7 minutes	After training: 90 neurons have been added.

The CPU computational time for training with GGAP-RBF is 360.7 minutes. The time complexity for GGAP-RBF is obviously too high as compared to MLP and ANFIS, which spent 188.45 seconds and 396.85 seconds respectively, as summarized in **Error! Reference source not found.**

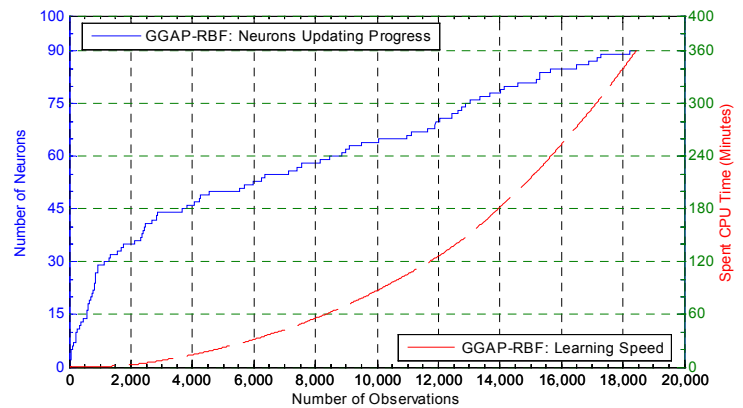


Figure 3: Learning speed and neuron updating progress for GGAP-RBP

For this problem, GGAP-RBF, which is proposed by [10], obtains a total of 90 neurons after the six-hour training. The time complexity is exponential. The more the neurons are added, the slower the algorithm work. This shows that GGAP-RBF does not scale well with the growing numbers of inputs especially when there are large numbers of instances for financial problems.

B. Experiment I

In Setting I – Training set, we have in total of 18,448 input rows (also known as samples, instances or observations) which comprise 9,224 of “Class 1” data and 9,224 of “Class 2” data, after over-sampling technique has been applied on “Class 1”. This forms the input data for the soft-computing models. We can apply the same input data, which we used for training, to the trained models (also known as networks), to obtain the recall rate. Recall is the process of putting input data into a trained network and receiving the output; subsequently compare the output with the desire output.

Table 4: Summary of result accuracy (recall rate)

Accuracies	Recall Rate
MLP	62.787%
ANFIS	62.538%
GGAP-RBF	54.51%

The obtained recall rates are comparable to the studies performed by [9], which are in the range of 57.9% to 65.7%

for MLP models. We further extend the study to the relationship between the predictions with the average appreciation in the equities price of the selected equities.

The analysis of the predictions performance of the soft-computing models against the known equities next-year share price appreciation (in terms of percentage), on the training set as shown as the following:

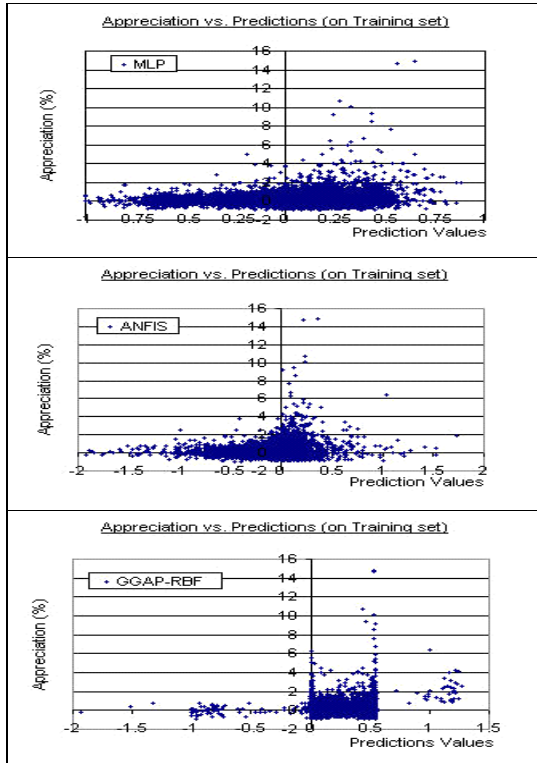


Figure 4: Actual appreciation vs. neural network prediction (setting I – training set)

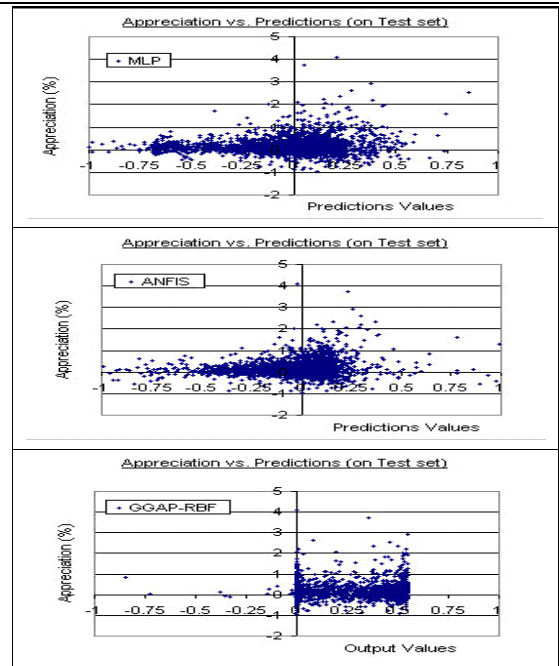


Figure 5: Actual appreciation vs. neural network prediction (setting I – test set)

From the above observations, MLP and ANFIS models show good positive correlation for the appreciation of the equities price in the following year and the models’ predictions, for both training and test set of data. In contrast to MLP and ANFIS models, GGAP-RBF model gives a different scatter chart. It does not form a clear skewing curve. However, it is noticeable that there exist some correlation between the equities appreciation and the predicted output values from neural network along the -1 and +1 x-axis values.

The correlation between the percentage of appreciation of the equities share price and the predicted output values, has been shown in the following table:

Table 5: Correlation (actual appreciation vs. neural network prediction)

Correlation	MLP	ANFIS	GGAP-RBF
Training set	0.312327151	0.231391027	0.184214955
Test set	0.129631143	0.152538366	0.056896817

It is expected that GGAP-RBF has the lowest correlation between its predicted output values and the appreciation of the equities share price on Test set. Again this demonstrates that GGAP-RBF performs poorly for equities prediction problems, which belong to class of stochastic prediction problems.

C. Experiment II

Prediction accuracies do not necessarily lead to monetary return. The main profit is to pick the most valuable equities to be invested in such that we can receive high return for next-year equities appreciation. In this section, Setting II is used for experiment. Experiments show that as the value of cut off

point increases, the number of selected or picked equities drop, and the rate of True Positive increases [18]. This is true for all the models under studied. As such, we only present the experiment result for MLP as below:

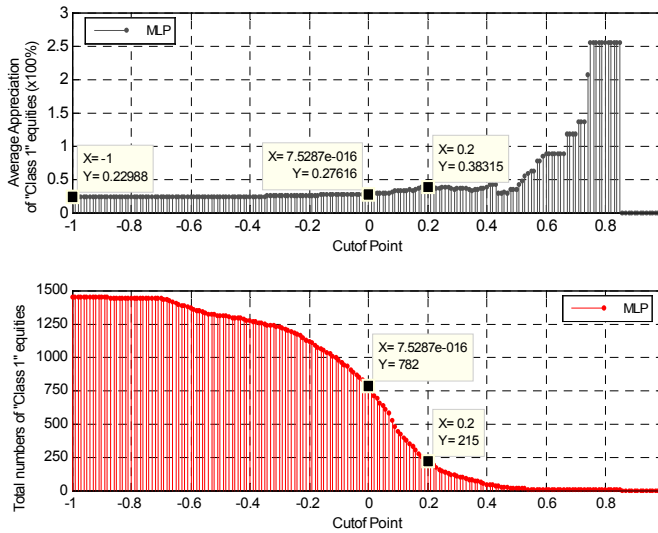


Figure 6: MLP – appreciation vs. cut-off-point (validation set – year 2004)

As the value of cut off point increases, the average appreciation of picked equities increases and the total number of signaled equities drops. As there is always a trade off between True Positive rate and True Negative rate, to maximize the output performance of the trained soft-computing models, we are interested to maximize the True Positive rate, at the same time, minimize the True Negative rate. This is the methodology of our study to configure the trained soft-computing models.

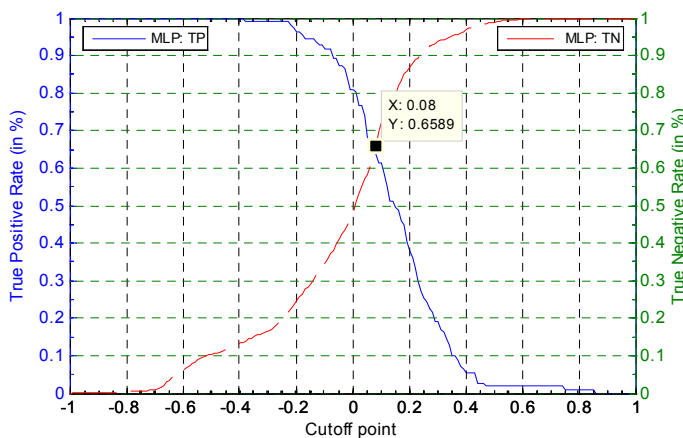


Figure 7: MLP – true positive rate vs. true negative rate

ROC curve has two variables from confusion matrix, which are True Positive rate (TP) and True Negative rate (TN) [18]. We want to maximize True Positive rate and minimize True Negative rate for optimal performance. As a result, the interceptor point of TP and TN will be the best optimal cut off

point for our problem. This is true to all the models under studied. As such, we only present the experiment results for MLP as **Error! Reference source not found.**

By applying ROC curve to systematically pick the cut off point, we have the cut off points of 0.08, 0.08 and 0.27 for MLP, ANFIS and GGAP-RBF respectively. The results are shown in **Error! Reference source not found.**

Table 6: Results of experiment II

Training Set			
Average appreciation of the market	77.46%		
	MLP	ANFIS	GGAP-RBF
Average appreciation of the selected equities	103.45%	108.77%	89.42%
Accuracy	64.58%	61.66%	54.49%
Validation Set			
Average appreciation of the market	22.99%		
	MLP	ANFIS	GGAP-RBF
Average appreciation of the selected equities	30.35%	32.63%	25.75%
Accuracy	65.75%	67.749 %	55.66%
Test Set			
Average appreciation of the market	11.22%		
	MLP	ANFIS	GGAP-RBF
Average appreciation of the selected equities	13%	14.93%	11.15%
Accuracy	71.35%	74.85%	61.70%

ANFIS model has the highest precision and average appreciation of the signaled stocks. On the other hand, GGAP-RBF has demonstrated its low ineffectiveness in picking valuable equities.

The above experiment assumes that we have unlimited resources. With such assumption, we can trade as many equities as possible. What if we want to focus on a certain number of equities only, say top 10 equities? We have early demonstrated that there indeed has positive correlation between the outputs of trained models and the appreciation

value.

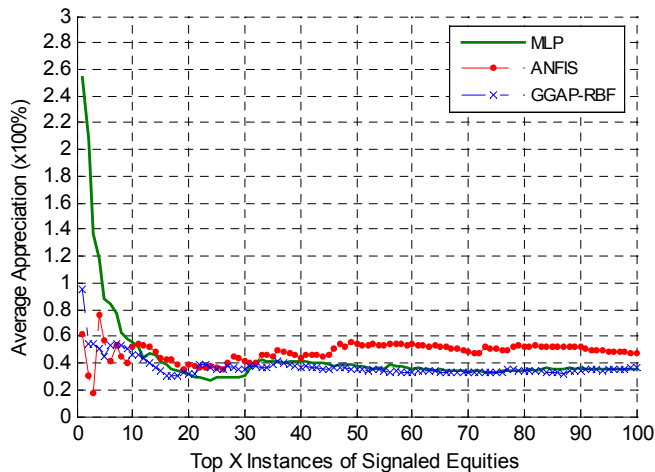


Figure 8: Average appreciation of selected numbers of equities with highest output values (x-axis represents selected x number of equities)

Error! Reference source not found. shows the average appreciation of the top picked equities. Intuitively, we can choose the top 10 of the signaled equities as the average appreciation is about 40% to 60% for all three soft-computing models (55.15%, 51.66% and 46.39% are obtained from MLP, ANFIS and GGAP-RBF models respectively), which is about doubling the average market appreciation, 22.99%.

V. CONCLUSION

This paper shows that GGAP-RBF has huge time complexity as compared to MLP and ANFIS. Moreover, GGAP-RBF does not out-perform MLP and ANFIS in Recall Rate. The paper also shows that there is positive relationship between predictions of the trained networks with the equities appreciation, which may result in better earnings for investment. A systematic equities selection approach based on ROC curve is proposed. As investors may want to focus on limited number of equities, we can choose the equities based on the strength of the predicted output values from neural network. We demonstrated that, the higher the predicted values, the higher the chances of having positive appreciations.

The neural networks used here only trained against DJIA equities from 1995 to 2004. It is advised to do experiments on more years of data and different markets to study their impacts and whether the results obtained in this research is applicable. The study is based on eleven identified features. Features sensitivity analysis can be performed to understand the significance of each feature. Most of the time, we can reduce the eleven features to a lesser numbers. Moreover, Logit regression analysis can be applied in our developed environment to compare the results as Logit approach is still very popular in financial market. We can use Weka [12] software to achieve this.

We can further develop a trading system to simulate real-life trading activities based on the work of this dissertation. To do this, we need to include some trading rules, such as transaction cost, limited fund and transaction timing.

REFERENCES

- [1] Angelos Kanas, "Neural Network Linear Forecasts for Stock Returns", *International Journal of Finance & Economics*, Vol. 6, Issue 3, Jul. 2001, pp. 245-254.
- [2] Aby Carroll D., Briscoe Nat R., Elliott R. Stephen, Bacadayan A., "Value Stocks: A Look at Benchmark Fundamentals and Company Priorities", *Journal of Deferred Compensation*, Fall 2001, Vol. 7 Issue 1, p20, 11p)
- [3] Baba, N., Inoue N., Asakawa H., "Utilizing of Neural Networks and GAs for Constructing Reliable Decision Support Systems to Deal Stocks", *Proceedings of the IEEE-INNS-ENNS International Joint Conference on Neural Networks, IJCNN 2000*, 111-116 vol. 5.
- [4] B. D. Ripley, "Pattern Recognition and Neural Networks", ISBN: 0521460867, Cambridge University Press, 1996.
- [5] Banz, R.W., "The Relationship between Return and Market Value of Common Stocks", *Journal of Financial Economics*, Vol. 9, Issue 1, pp. 3-18.
- [6] Basu S., "Investment Performance of Common Stocks in Relation to Their Price-Earnings Ratios: A Test of the Efficient Market Hypothesis", *The Journal of Finance*, Vol. 32, No. 3. (Jun, 1977), pp. 663-682.
- [7] Benjamin Graham "Security Analysis", ISBN: 0071448209, McGraw-Hill Publisher, 3rd Edition, December 10, 2004.
- [8] Chen C., Liaw, A., and Breiman, L. "Using random forest to learn unbalanced data," Technical Report 666, Statistics Department, University of California at Berkeley, 2004. <http://www.stat.berkeley.edu/users/chenchao/666.pdf>
- [9] Falas T., A. Charitou, and C. Charalambous, "The Application of Artificial Neural Networks in the Prediction of Earnings", *IEEE, Orlando*, 1994.
- [10] G.-B. Huang, P. Saratchandran and N. Sundararajan, "A Generalized Growing And Pruning RBF (GGAP-RBF) Neural Network for Function Approximation," *IEEE Transactions on Neural Networks*, vol. 16, no. 1, pp. 57-67, 2005.
- [11] Henry R. Oppenheimer, Gary G. Schlarbaum, "Investing with Ben Graham: An Ex Ante Test of the Efficient Markets Hypothesis", *The Journal of Financial and Quantitative Analysis*, Vol. 16, No. 3 (September, 1981), 341-360.
- [12] Ian H. Witten and Eibe Frank (2005) "Data Mining: Practical machine learning tools and techniques", 2nd Edition, Morgan Kaufmann, San Francisco, 2005.
- [13] Janet Lowe, "Benjamin Graham on Value Investing: Lessons from the Dean of Wall Street", ISBN: 0140255346, Penguin Books Publisher, 1995.
- [14] José C. Principe, Neil R. Euliano, W. Curt Lefebvre "Neural and Adaptive Systems: Fundamentals through Simulations" ISBN: 0471351679, Wiley Publisher, 1999

- [15] Joseph D. Piotroski, "Value Investing: The Use of Historical Financial Statement Information to Separate Winners from Losers", *Journal of Accounting Research*, Vol. 38, Supplement: Studies on Accounting Information and the Economics of the Firm (2000), pp. 1-41.
- [16] J.-S.R. Jang, "ANFIS: Adaptive-Network-Based Fuzzy Inference Systems", *IEEE Trans. Systems, Man & Cybernetics* 23 (1993) 665—685.
- [17] J.S. Jang, "ANFIS: Adaptive-network-based fuzzy inference system", *IEEE Trans. On System, Man and Cybernetics*, 23(3):665-685, 1993.
- [18] Kubat, M. & Matwin, S. (1997). "Addressing the curse of imbalanced data sets: One-sided sampling", In *Proceedings of the 14th International conference on Machine Learning*, pp. 179-186, Morgan Kaufmann
- [19] Quah T. S., Bobby Srinivasan, "Utilizing Neural Network in Stock Pickings", *The 2000 International Conference on Artificial Intelligence, Las Vegas, U.S.A.*, 26-29 June 2000, pp. 941-946.
- [20] Reinganum, Marc R., "Abnormal Returns in Small Firm Portfolios", *Financial Analysts Journal*, Vol. 37, Issue 2, pp. 52-56.
- [21] Richard Frankel, Charles M. C. Lee, "Accounting Valuation, Market Expectation, and Cross-sectional Stock Returns", Vol. 25, Issue 3, 30 June 1998, pp. 283-319.
- [22] Swets J. A., "Measuring the Accuracy of Diagnostic Systems", *Science*, Vol. 240, No. 4857, Jun 3 1998, pp. 1285-1293.
- [23] Vanstone B., Tan C., "A Survey of the Application of Soft Computing to Investment and Financial Trading", 8th Australian & New Zealand Intelligent Information Systems Conference (ANZIIS 2003), Sydney, 2003.
- [24] Vanstone B., Finnie G., Tan C., "Enhancing Security Selection in the Australian Stockmarket using Fundamental Analysis and Neural Networks", *Proceedings of the 8th IASTED International conference on Artificial Intelligence and Soft Computing (ASC 2004)*, Marbella, Spain, 1-3 September 2004.
- [25] Vanstone B., Finnie G., Tan C., "Applying Fundamental Analysis and Neural Networks in the Australian Stockmarket", *Proceedings of the International conference on Artificial Intelligence in Science and Technology (AISAT 2004)*, Hobart, Tasmania, 21-25 November 2004.
- [26] Vanstone B., Finnie G., Tan C., "Evaluating the Application of Neural Networks and Fundamental Analysis in the Australian Stockmarket", *IASTED International Conference on Computational Intelligence*, CI 2005, Calgary, AB, Canada, ACTA Press.
- [27] Werner F. M. De Bondt, Richard H. Thaler, "Further Evidence on Investor Overreaction and Stock Market Seasonality", *The Journal of Finance*, Vol. 42, No. 3, Papers and Proceedings of the Forty-Fifth Annual Meeting of the American Finance Association, New Orleans, Louisiana, December 28-30, 1986. (Jul., 1987), pp. 557-581.
- [28] Neural Network FAQ: [Online] <ftp://ftp.sas.com/pub/neural/FAQ.html> (current April 8, 2006)
- [29] About Prof. Lotfi A. Zadeh: [Online] <http://www.cs.berkeley.edu/~zadeh/acprco.html> (current April 8, 2006)
- [30] Wikipedia: RBF: [Online] <http://en.wikipedia.org/wiki/RBF> (current April 8, 2006)
- [31] MATLAB Help: Neural Network Toolbox and Fuzzy Logic Toolbox

Jon Tong-Seng Quah - Dr. Quah is currently a professor with the Information Communication Institute of Singapore (ICIS), a division of the School of Electrical & Electronic Engineering, Nanyang Technological University. He received his BSc (Hons) in Information Systems, MSc in Computer Performance Monitoring, and PhD in Modeling Financial Markets using Neural Networks from the National University of Singapore in 1988, 1991, and 1997 respectively. An entrepreneur turned academician, Dr. Quah had been a faculty member of the Department of Information Systems & Computer Science as well as Institute of Systems Science, both within the National University of Singapore campus. Dr. Quah has undertaken joint projects with major companies in banking and airline industries, as well as statutory boards of the government body. Dr. Quah published widely in international conferences and journals. His research interests include A.I. applications utilizing neural networks, expert systems, data mining etc., such as financial markets modeling; Internet applications (such as e-commerce and e-learning) and software engineering (such as software reliability, fault prediction etc.)